

# COMMUNITY DEVELOPMENT

# PROPOSED ACTIONS



## Issues Identified:

- Lack of regular communication between Villages and business owners.
- Need for diverse funding sources for projects and programs.
- Importance of supporting economic development initiatives and tourism promotion.
- Lack of regional coordination for creek access

start boat in at Rte 66 Chalk Cove &  
end at Stuyvesant Falls dam.  
~~Figure out~~ Figure out bypass for dams & Valatie falls

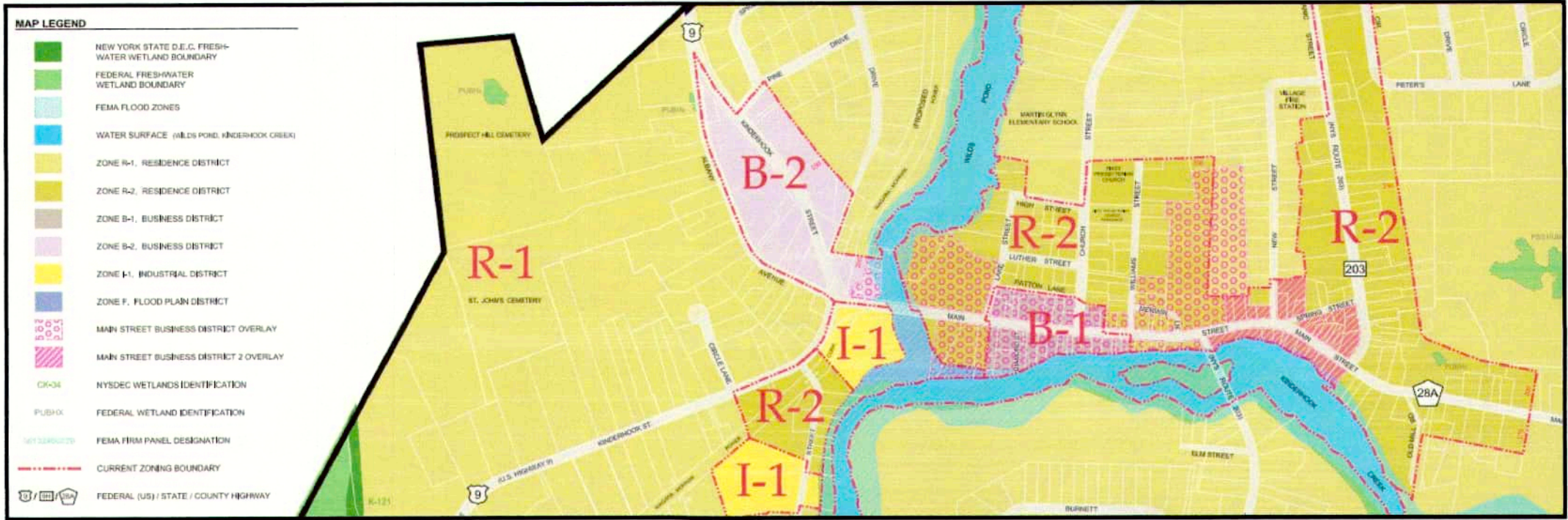
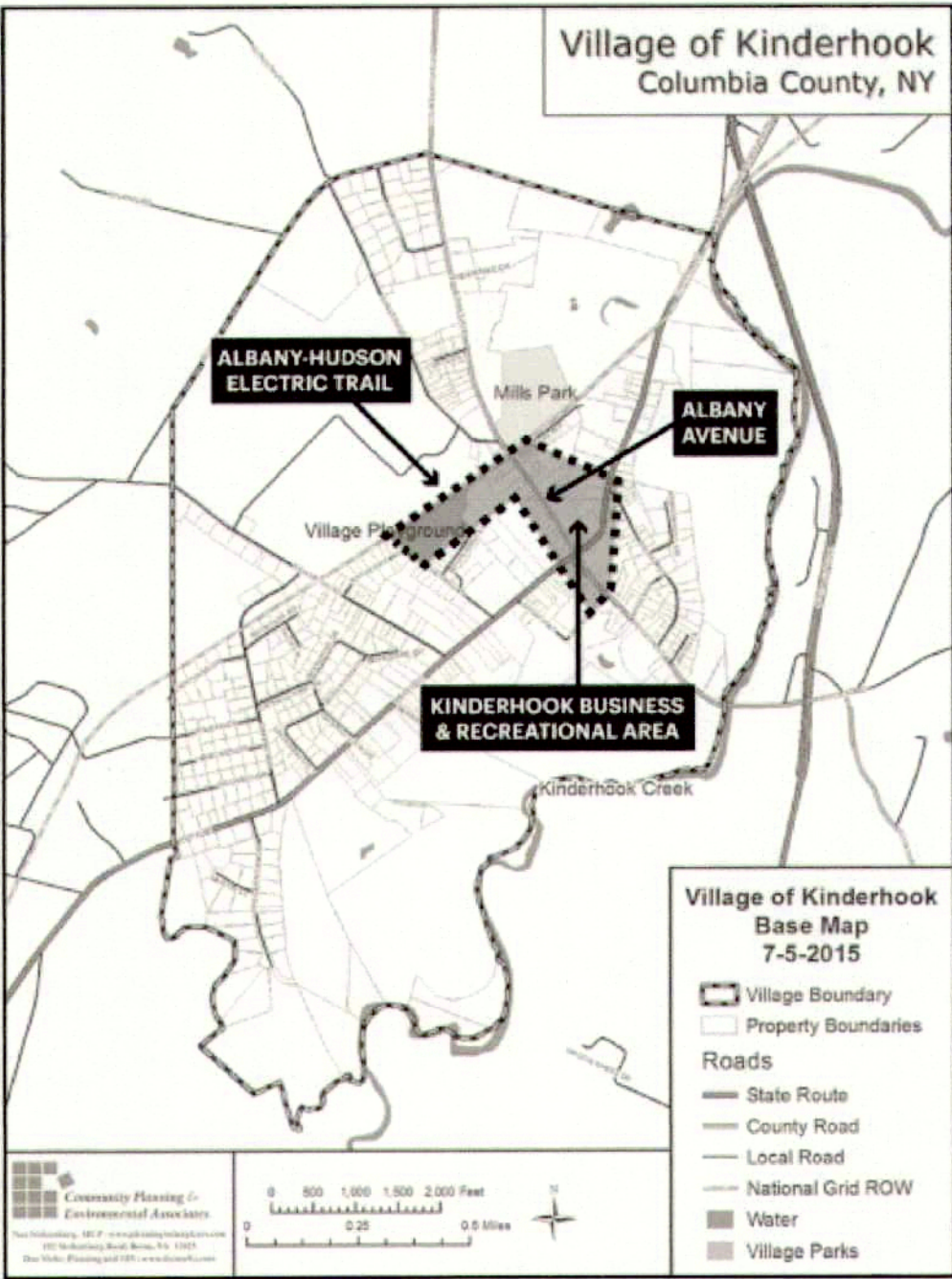
1. Continue to establish regular communication channels with business owners.
2. Continue to explore diverse funding opportunities for projects through the development of a funding strategy.
3. Continue to support economic development and tourism initiatives such as festivals, sporting events, concerts, fishing, and guided tours.
4. Improvements to creek access cooperatively with the upstream and downstream communities and Lindenwald to develop this access.

## Comments:

Funding is critical -  
Multiyear support.

Differentiate  
between economic  
development focus  
between 2 villages  
  
Note: Especially in  
final report.

KLC: Coordinate w/  
TOK / Villages for competitive  
flood mitigation / need of water  
relief  
improvement





# COMMUNITY DESIGN & GUIDELINE CHANGES

# PROPOSED ACTIONS



## Issues Identified:

- Both Villages community design lacks cohesion and consistent design.
- Pedestrian facilities and traffic safety is insufficient.
- Housing is limited and becoming less affordable.

- 37. Implement a bicycle and pedestrian safety plan that generates a community identity through design guidelines and enhances pedestrian safety and street infrastructure.
- 38. Better wayfinding signage that directs people toward to the Central Business Districts and the waterfront.
- 39. Better wayfinding / information signage regarding recreational activities such as kayaking, mountain biking, hiking, and swimming.
- 40. Community design guideline changes - cohesive aesthetic between two villages (signage).

Canoeing & tubing too! yes!

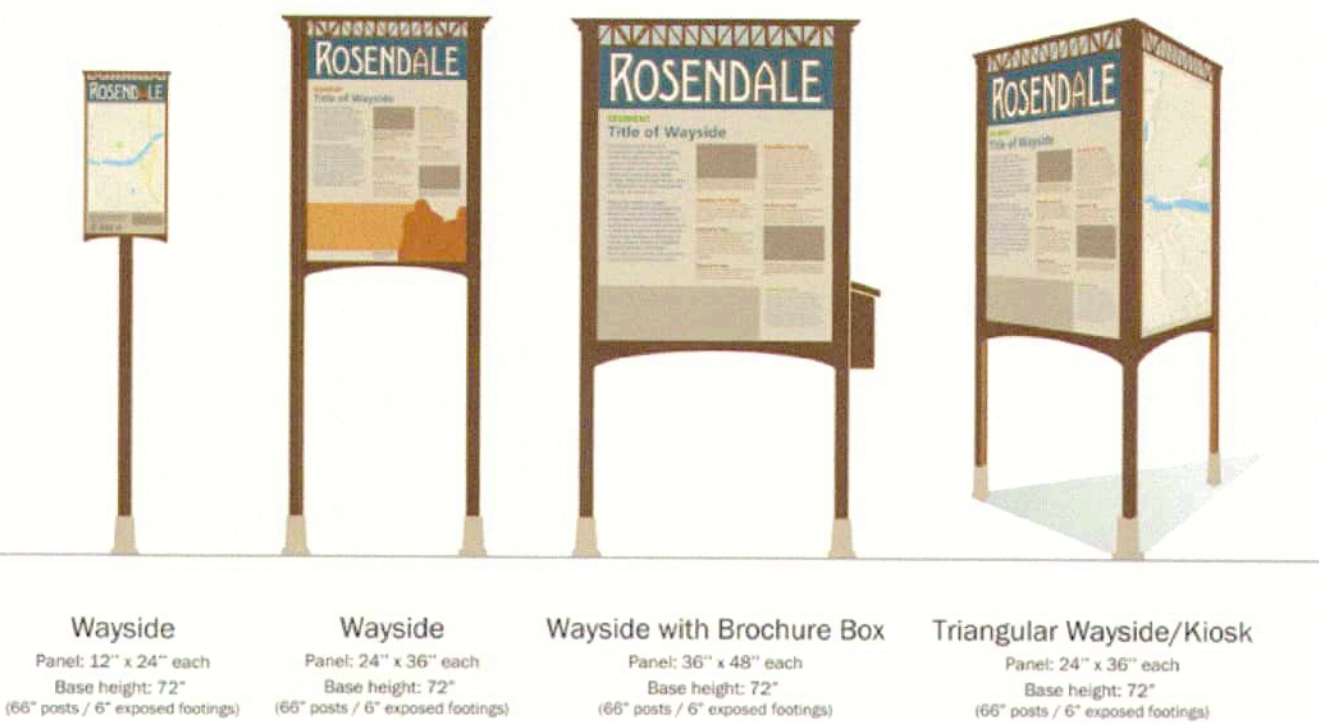
## Comments:

NO PROPOSED ACTIONS RELATED TO ISSUE OF HOUSING AFFORDABILITY

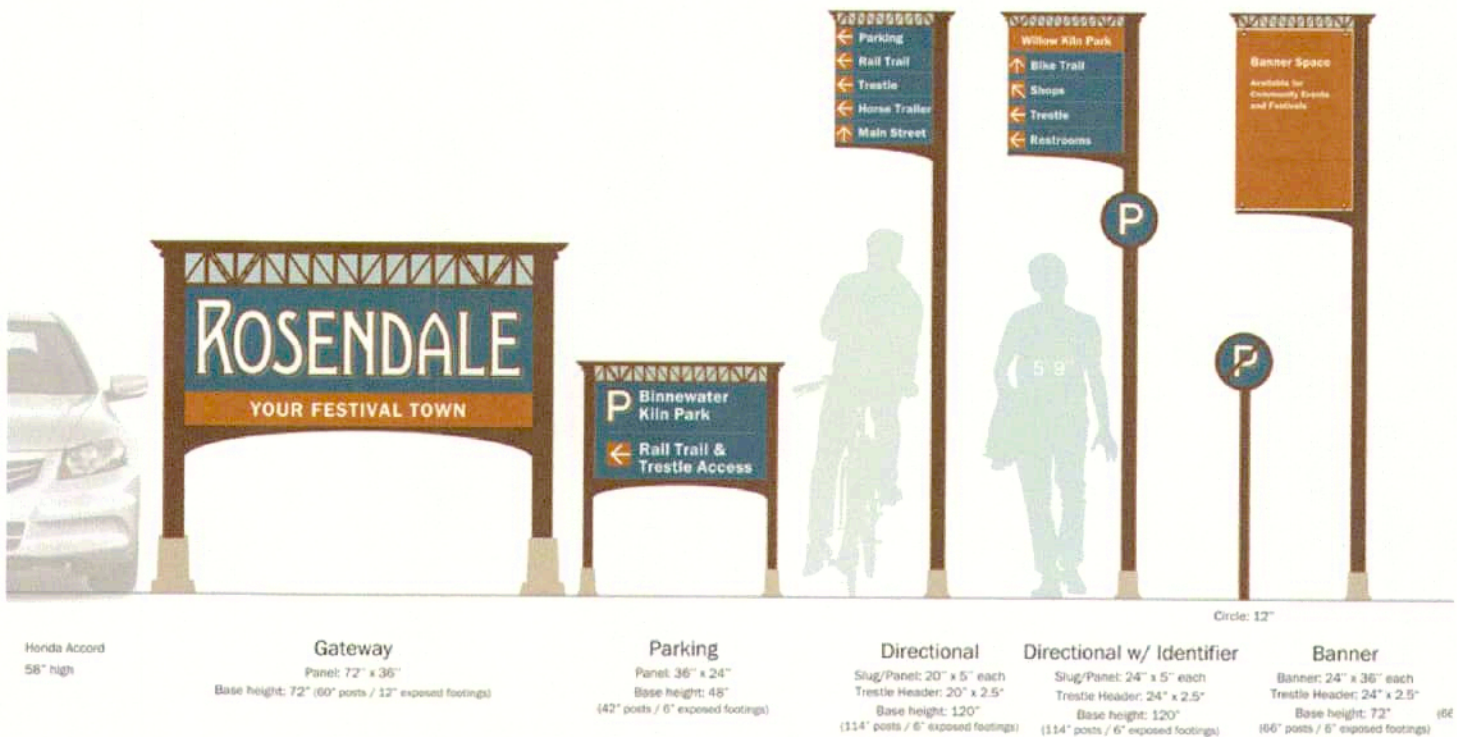
Extend EICHYBUSH RD sidewalk to rail trail for pedestrian safety  
Include historic context in proposed action

Emphasize  
Bike Safety  
Safe lanes  
Reduction in  
Speeds for  
cars.

Main St. Valerette has already had a traffic fatality & several pedestrian car accidents - need to be addressed



Signage Examples (Source: Finding Rosendale 2015)





# TRAILS & WALKWAYS

# PROPOSED ACTIONS



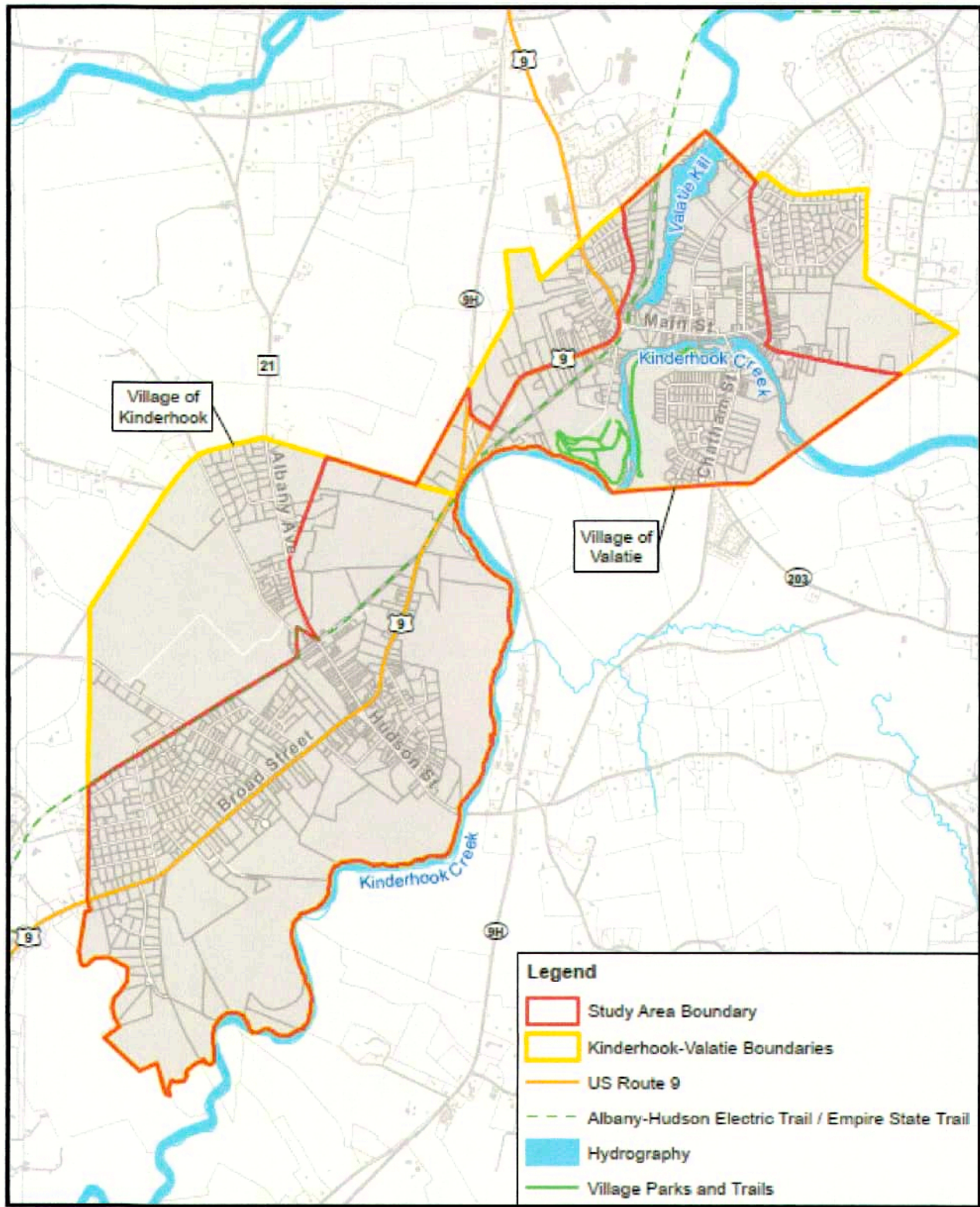
## Issues Identified:

- The Villages lack an organized approach to educational trails and interpretive signage.
- There is an absence of kayak launch sites, fishing platforms, scenic overlooks, and playgrounds.
- Mountain biking trails exist at River Street Park but there is a dearth of signage and publicity.

- 32. Invest in the studies and mapping needed for trails in Mill’s Park and the Vly.
- 33. Explore Opportunities to connect downtown Valatie to Pachaquack to the north and River Street Park to the west via pedestrian bridges.
- 34. Create or enhance AHET connections with public parks and creek access sites, including wayfinding and interpretative signage.
- 35. Establish a mountain bike trail at River Street Park
- 36. Purchase land along creek to create a walking trail.

an informed one already exists

## Comments:





# TRAILS & WALKWAYS

# PROPOSED ACTIONS



## Issues Identified:

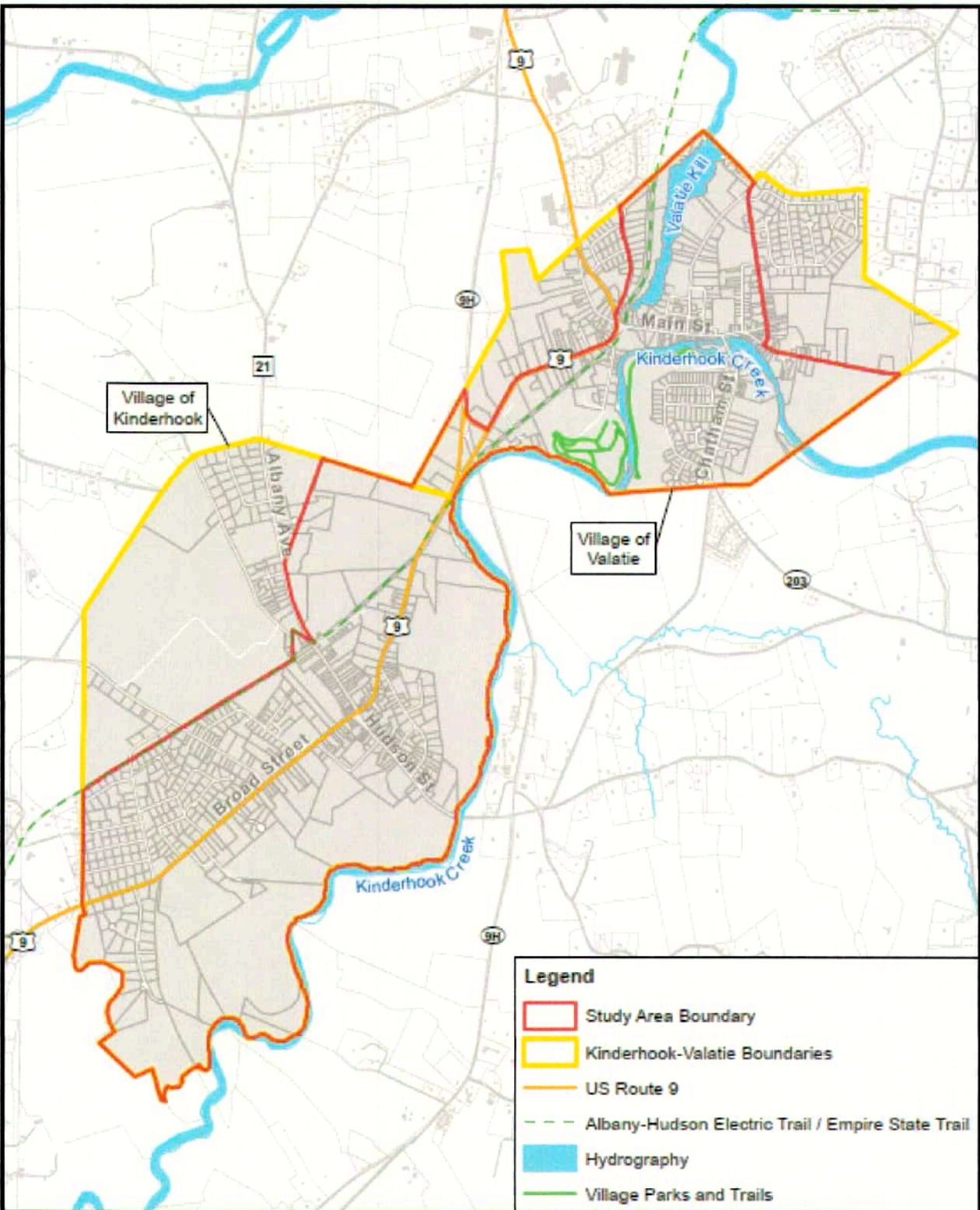
- The Villages lack an organized approach to educational trails and interpretive signage.
- There is an absence of kayak launch sites, fishing platforms, scenic overlooks, and playgrounds.
- Mountain biking trails exist at River Street Park but there is a dearth of signage and publicity.

- 28. Retrofit existing and design future trails to reduce erosion and minimize maintenance costs using sustainable trail design, materials, and construction practices.
- 29. Partner with local organizations to establish a system of educational trails with interpretive signage for tours.
- 30. Expand kayak launch sites, fishing platforms, scenic overlooks, and playgrounds.
- 31. Promote biking through signage, trail maintenance, trail connectivity to/ from the Electric Trail, and events.

## Comments:

viewing over look/  
boardwalk type  
area along the  
rear of buildings  
along main st.  
along creek w/  
bridge to small  
island near dams  
& then to Patchaquack

Biking is  
critical as  
recreation and  
to promote  
our  
community



Parks & Trails Map



# INFRASTRUCTURE IMPROVEMENTS

# PROPOSED ACTIONS



## Issues Identified:

- The Villages’ streetscapes lack cohesion but have economic potential, especially in the Central Business Districts.
- Access from the Central Business Districts to the waterfront is insufficient.
- There is a negative perception of truck traffic through the Villages.
- Route 9H overpass bridge is deteriorating and in need of repair, concrete deck is deteriorating and small chunks of concrete often fall beneath the overpass

- 25. Improve vehicular access to waterfront sites with new parking.
- 26. Improve bicycle access to waterfront sites with wayfinding signage, pavement marking, bike racks, and bike repair stations.
- 27. Villages Work together to advocate for NYS rehabilitation and repair of Route 9H overpass bridge.

Rehabilitation of and repair of Route 9H overpass bridge is essential!

## Comments:

Garbage in - garbage out

Consider bike lanes radiating from Rail Trail

9H overpass should be priority for DOT - check on status



Route 9H Overpass



# INFRASTRUCTURE IMPROVEMENTS

# PROPOSED ACTIONS



## Issues Identified:

- The Villages’ streetscapes lack cohesion but have economic potential, especially in the Central Business Districts.
- Access from the Central Business Districts to the waterfront is insufficient.
- There is a negative perception of truck traffic through the Villages.
- Route 9H overpass bridge is deteriorating and in need of repair, concrete deck is deteriorating and small chunks of concrete often fall beneath the overpass.

- 22. Improve streetscapes and economic potential in the Central Business District.
- 23. Improve pedestrian access to waterfront sites by developing multi-use trails that connect the Central Business Districts to the creek.
- 24. Collaborate with NYS DOT on truck traffic mitigation and boat launch construction.

consider elderly  
boaters  
Kayak & canoe

## Comments:

consider zoning & site planning for future mixed use commercial/residential developments.

KLS: coordinate w/  
TOK on dam maintenance  
projects to prevent / protect  
downstream flooding.

IMPROVE PEDESTRIAN  
ACCESS TO  
PACHAQUACK FROM  
MAIN STREET  
AND/OR DIAMOND  
STREET W  
VARIATION





# RECREATION

# PROPOSED ACTIONS



## Issues Identified:

- Limited formal access to the creek for various recreational activities such as fishing and kayaking, or walking along the creek.
- There are no designated swimming areas.
- Lack of coordination with neighboring communities on access points to the waterfront.
- Limited access to the waterfront due to private property concerns.
- A need for recognition that Hudson Street Landing and the 9H overpass are areas for scenic enjoyment.

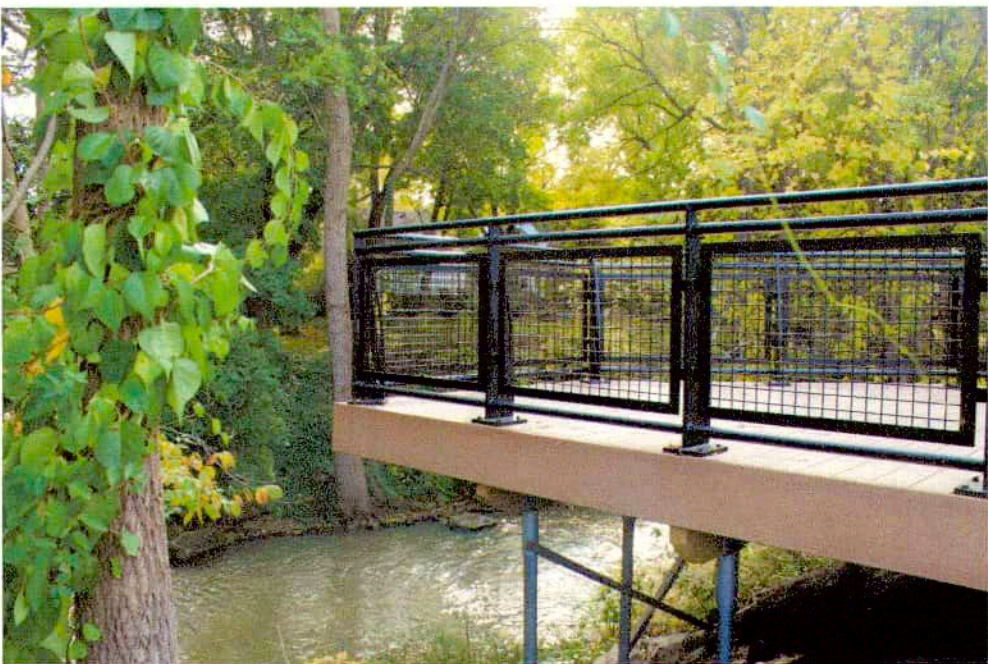
- 18. Fishing/viewing platforms at Santa’s Park and Beaver Falls.
- 19. Create a plan for managing woody debris that balances ecological needs, recreational interests, and landowner concerns.
- 20. Water level gauge (stream gage?) for safer kayak access.
- 21. Picnicking or barbecuing amenities at the Hudson Street Landing site.



Additional  
public use of  
K. Creek area  
will need public  
toilets hopefully.  
(Composting ones?)

## Comments:

Water level gauge /  
very important.



Overlook Platform



Hudson Street Landing



# RECREATION

## Issues Identified:

- Limited formal access to the creek for various recreational activities such as fishing and kayaking, or walking along the creek.
- There are no designated swimming areas.
- Lack of coordination with neighboring communities on access points to the waterfront.
- Limited access to the waterfront due to private property concerns.
- A need for recognition that Hudson Street Landing and the 9H overpass are areas for scenic enjoyment.

## Comments:

It would be great if the ~~dam~~ dam on the Valatie Kill was fixed and Wild's Pond filled. Access to that would be a terrific resource.

Bridge in Valatie over Valatie Kill has a hidden scenic view.  
This is a natural tourist attraction that could be revealed through inexpensive projects.

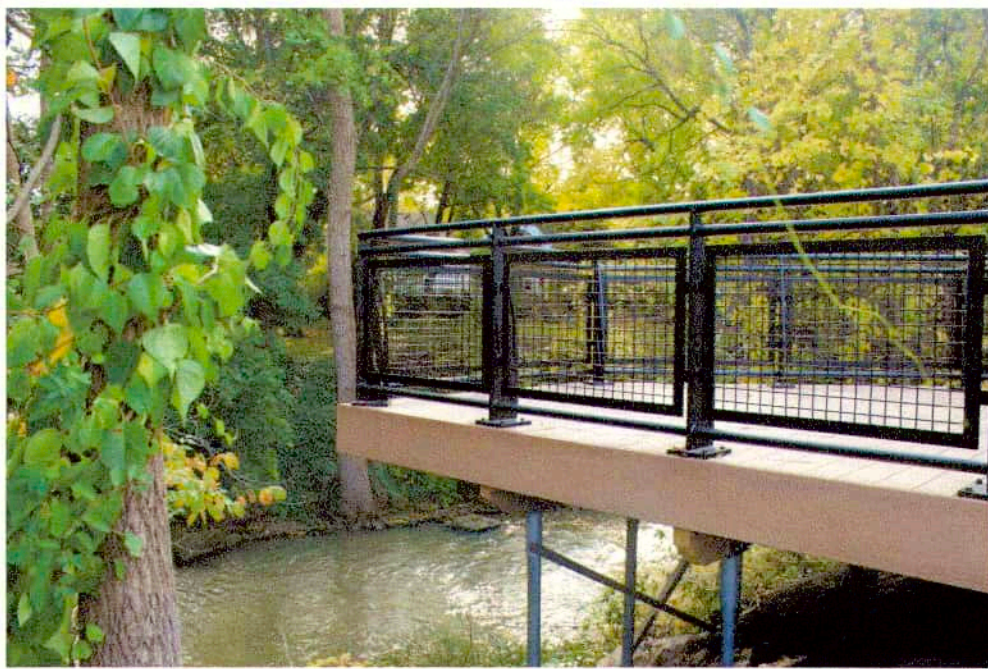
# PROPOSED ACTIONS



14. Create formal creek access points and designated areas for various activities such as swimming, fishing, and kayaking. *+ canoeing + tubing*
15. Coordinate with neighboring communities on waterfront access plans.
16. Work with private property owners on access agreements or land acquisition for improved creek access.
17. Establish Hudson Street Landing and the 9H overpass as areas for scenic enjoyment through signage, parking, and other amenities, as an opportunity to unite the two communities and advocate for DOT upkeep.

• Include Kinderhook Lake in any water flow related actions

Hudson Street Landing well on the way!  
✓ Private property owners & access



Overlook Platform



Hudson Street Landing



# ENVIRONMENTAL SUSTAINABILITY

# PROPOSED ACTIONS



## Issues Identified:

- Shoreline erosion and destabilization especially at River Street Park and Pa-chaquack Preserve.
- Multiple types of invasive species were noted a cause of erosion. Species include plants, animals, and pathogens.
- Lack of Creekside vegetation between intensive land use areas and the water's edge.
- Lack of regrowth in streamside forests

13. Along the shoreline of River Street Park, establishment of adequate vegetation between the water's edge with shoreline stabilization plantings, regrading steep shoreline slopes to better accommodate shoreline plantings/stabilization plantings, vegetated riprap or timber cribbing where insufficient space exists for regarding, and vegetated berms along the wastewater treatment plant to protect it from severe flooding

Are we assured that wastewater treatment runoff not add pollution to Kinderhook Creek?

## Comments:

Please consider ongoing maintenance costs with all projects and plan for them

please consider obtaining advice about controlling invasive species esp Japanese Knot weed



Department of Environmental Conservation

Hudson River Estuary Program



American Bittersweet—Invasive Plant (Source: Maine.gov)





# ENVIRONMENTAL SUSTAINABILITY

# PROPOSED ACTIONS

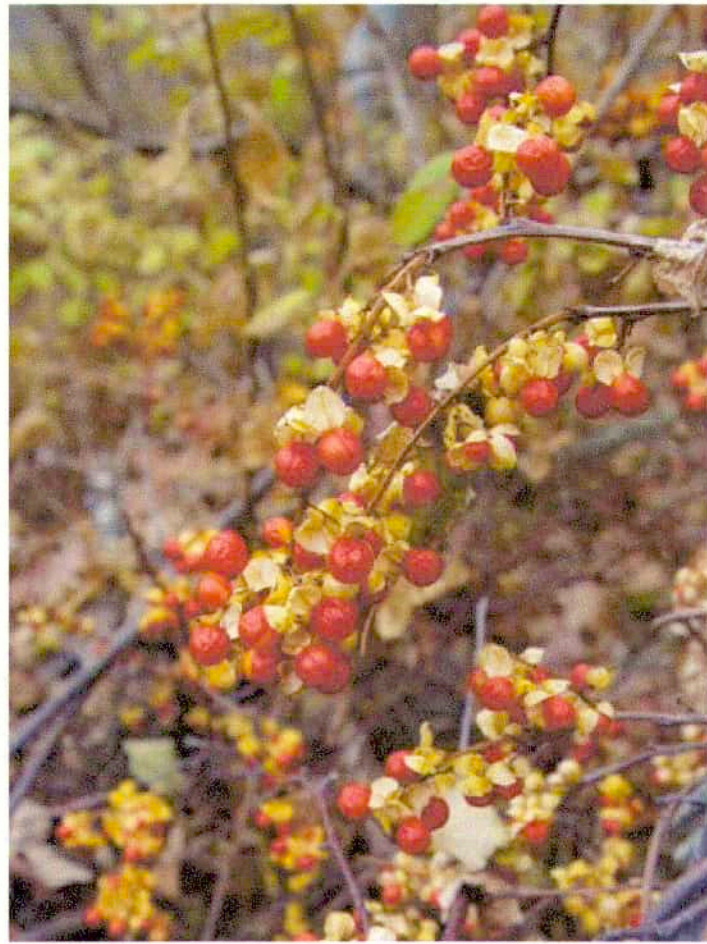


## Issues Identified:

- Shoreline erosion and destabilization especially at River Street Park and Pa-chaquack Preserve. ●
- Multiple types of invasive species were noted a cause of erosion. Species in-clude plants, animals, and pathogens.
- Lack of Creekside vegetation between intensive land use areas and the water’s edge.
- Lack of regrowth in streamside forests

- 9. Retrofit Hudson Street Landing with kayak/canoe launch and native replanting.
- 10. Acquire more land along the Kinderhook Creek. ●
- 11. Implement local policies and procedures that reduce impacts to Kinderhook Creek.
- 12. ● Green infrastructure was recommended at the Beaver Cotton Mill *Electric Company property on Chatham St.* including new parking lot trees, native vegetation in lawn areas and porous pavement parking lot replacement.

## Comments:



American Bittersweet—Invasive Plant (Source: Maine.gov)





# ENVIRONMENTAL SUSTAINABILITY

# PROPOSED ACTIONS



## Issues Identified:

- Shoreline erosion and destabilization especially at River Street Park and Pa-chaquack Preserve.
- Multiple types of invasive species were noted a cause of erosion. Species include plants, animals, and pathogens.
- Lack of Creekside vegetation between intensive land use areas and the water's edge.
- Lack of regrowth in streamside forests

7. Preserve and enhance natural areas by implementing long-term strategies for healthy ecosystems. Actions may include vegetation management practices (through managing invasive species, planting diverse native species, mitigating deer herbivory, and promoting forest and understory regeneration) and the diversification of species to mitigate the effects of invasives like bittersweet. Pursue funding for DEC study and volunteer efforts.
8. Design access sites to the waterfront that protect sensitive resources, minimize erosion, and minimize runoff. Complement with historical and wayfinding signage.

## Comments:

TAKE A COMPREHENSIVE APPROACH TO INVASIVE PLANT MANAGEMENT INCLUDING PARKS AND AHET TRAIL.

action on invasives can have a positive effect on the whole region. Could be a replicable model

Planting Trees + Shrubs to replace dense Vegetation



Department of Environmental Conservation

Hudson River Estuary Program



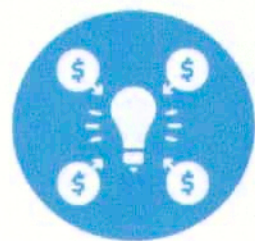
American Bittersweet—Invasive Plant (Source: Maine.gov)





# ENVIRONMENTAL SUSTAINABILITY

# PROPOSED ACTIONS



## Issues Identified:

- Shoreline erosion and destabilization especially at River Street Park and Pachaquack Preserve.
- Multiple types of invasive species were noted a cause of erosion. Species include plants, animals, and pathogens.
- Lack of Creekside vegetation between intensive land use areas and the water's edge.
- Lack of regrowth in streamside forests

5. Implement shoreline resilience measures and vegetation restoration, and stream restoration projects address shoreline erosion and destabilization along the Kinderhook Creek, especially at River Street Park and Pachaquack Preserve. Partner with Trout Unlimited.
6. Plan for healthy natural areas by developing long-term strategies that address the stresses to them. For example, creating a pest management and tree replacement strategy to ensure Pachaquack's forest can remain productive.

## Comments:

RLC dam ~~has~~ is one of the sources of the invasive weed species in the Kinderhook Creek. We should discuss these issues / remediation efforts

Removed dead Trees in the Creek

Is there a solution for Knot weed?



Department of Environmental Conservation

Hudson River Estuary Program



American Bittersweet—Invasive Plant (Source: Maine.gov)

